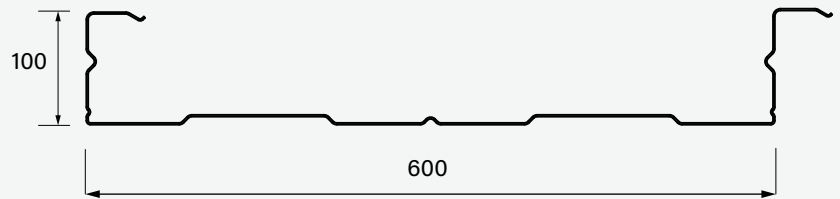
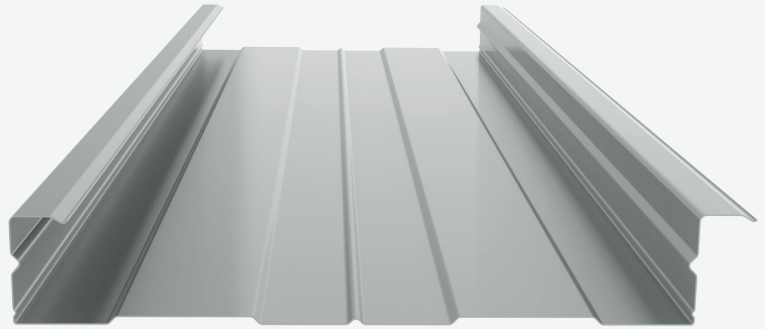


Liner trays

100/600



Technical properties

Profile plate type	Steel thickness [mm]	Weight [kg/m ²]	I _{eff} [cm ⁴ /m]	PERFO weight[kg/m ²]	I _{eff} [cm ⁴ /m]
100/600	0.75	9	91	7.5	65
	0.88	10.6	126	8.8	81
	1.00	11.9	141	9.9	96
	1.25	14.8	177	12.3	121
	1.50	17.8	214	14.8	146

Steel grade

S320GD

Coatings

Galvanised Z275

Optional

Perforated

Dimensions

Standard 1,800 - 15,000

Length [mm]

Minimum 1,800

Maximum 22,000

Packaging

Max. number per package 22 off

Max. weight per package - kg

Certificates

